

# V-Gard® Authenticity Guide

How to Distinguish the Real V-Gard Helmet from a Copy



# 1. MSA Logo

Is there a label with the MSA Logo on the left rear lug (when wearing the helmet)?

## Authentic MSA V-Gard

All MSA V-Gard Helmets have the MSA logo in this position on the helmet.



*Yes, MSA Original.*



## Copies/Infringement

If an MSA logo is not showing on the left rear lug on the helmet, it is a copy.



*No, Copy/Infringement.*





Is the underbrim of the visor textured?

## 2. Textured Underbrim

### Authentic MSA V-Gard

All MSA V-Gard Helmets have a textured surface on the underside of the brim. This is the Glaregard® Surface under the brim.



Yes, MSA Original.

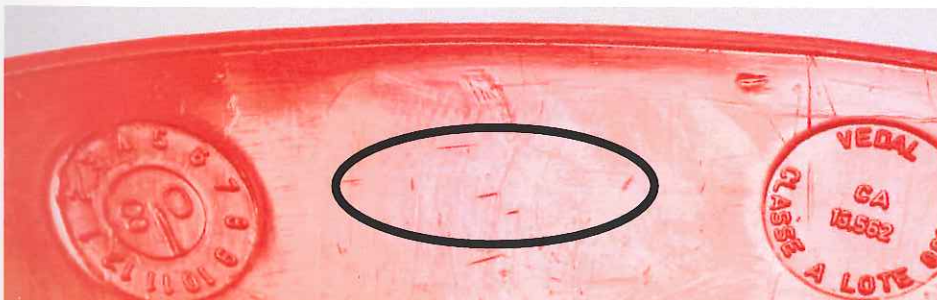


### Copies/Infringement

If the underside of the brim is smooth and shiny, the helmet is a copy.



No, Copy/Infringement.



### 3. Attachment Hole

Is the attachment hole for the chin strap or swing ratchet connection protruding from the helmet?

#### Authentic MSA V-Gard

The swing ratchet connection in MSA's V-Gard Helmet consists of a hole on the inside of the helmet between the lug and the accessory attachment slot.



Yes, MSA Original.

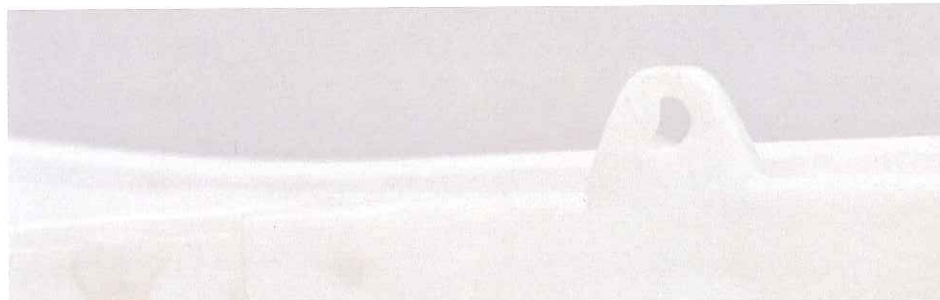


#### Copies/Infringement

If the attachment hole is in a structure that protrudes from the helmet, it is a copy.



No, Copy/Infringement.



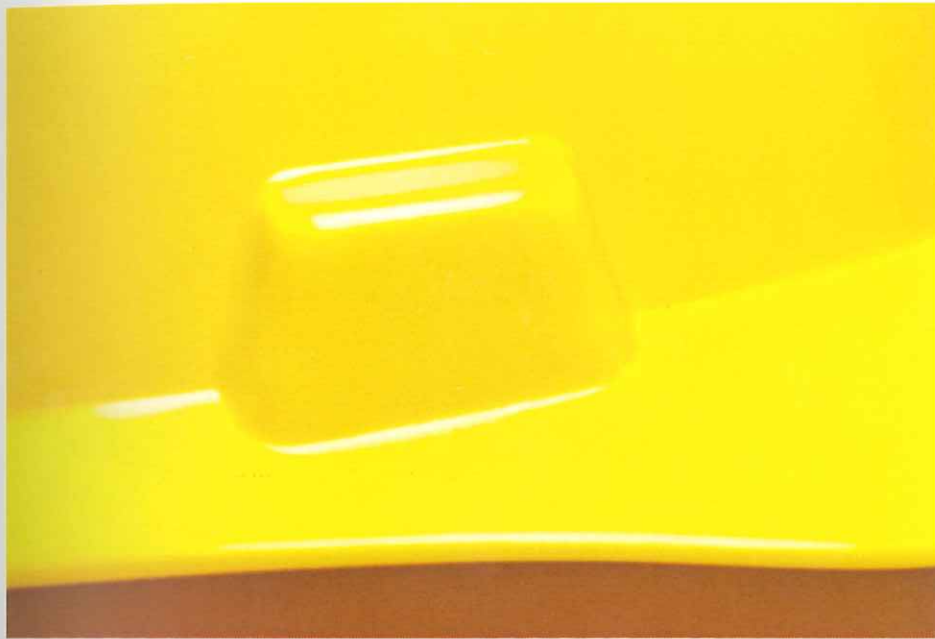


Is the shape of the four lugs for attaching the suspension trapezoidal?

# 4

## 4. Trapezoidal Shaped Lugs

### Authentic MSA V-Gard



The lugs on the MSA V-Gard Helmet are trapezoidal in shape.



*Yes, MSA Original.*

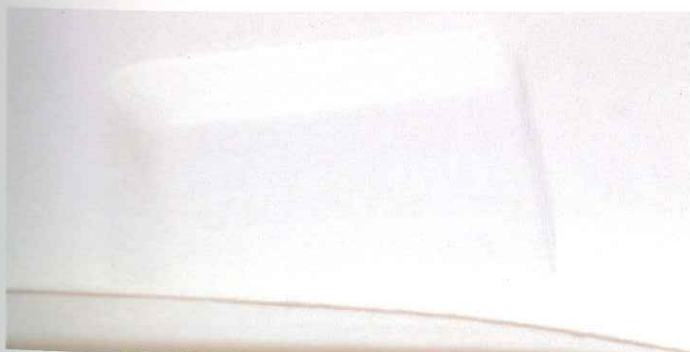
### Copies/Infringement



If the shape of the lugs are rectangular, it is a copy.



*No, Copy/Infringement.*



## 5. MSA Molded Logo

Is there an MSA logo molded into the underbrim of the visor?

### Authentic MSA V-Gard

All MSA V-Gard Helmets have the MSA logo molded into the visor underbrim.



Yes, MSA Original.



### Copies/Infringement

If there is no MSA logo, the helmet is a copy.



No, Copy/Infringement.

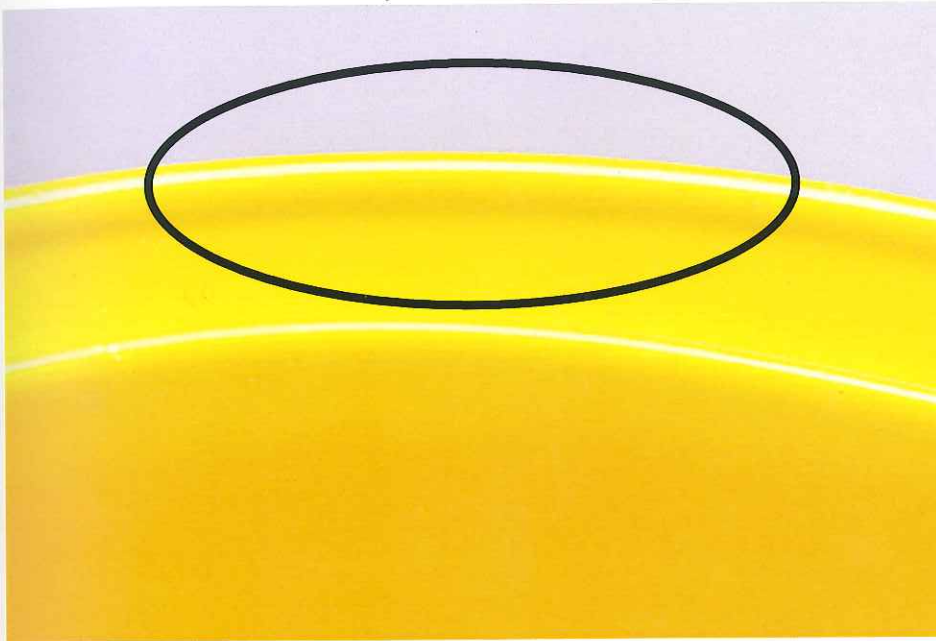


Is the edge of the helmet neatly trimmed?

# 6

## 6. Smoothly Trimmed Edge

### *Authentic MSA V-Gard*

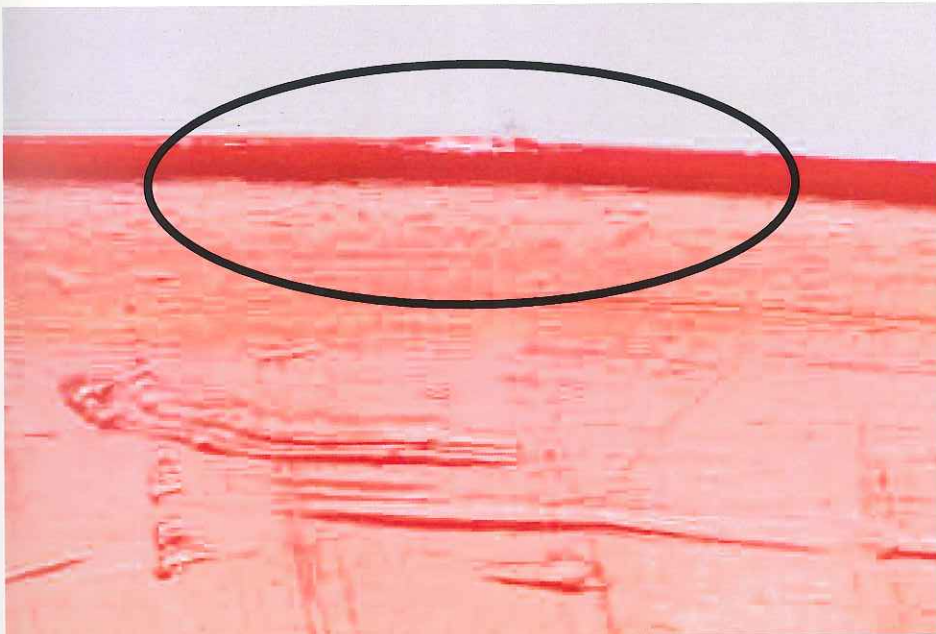


All MSA V-Gard Helmets have a smoothly trimmed edge.



*Yes, MSA Original.*

### *Copies/Infringement*



If the edge is not trimmed (i.e. it has a sharp edge), it is a copy.



*No, Copy/Infringement.*



## 7. Smooth Injection Molding

Does the helmet have a smooth pinch-off  
at the point of injection molding?

### Authentic MSA V-Gard

All MSA V-Gard Helmets have a  
smooth pinch-off from the  
injection molding gate,  
on the inside surface  
of the helmet.



*Yes, MSA Original.*

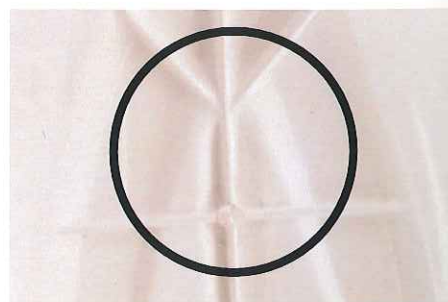
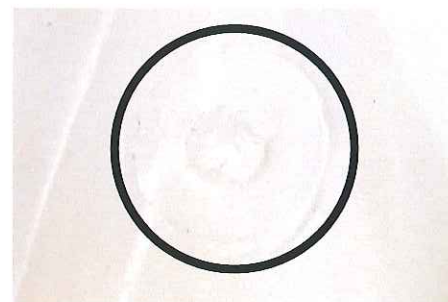
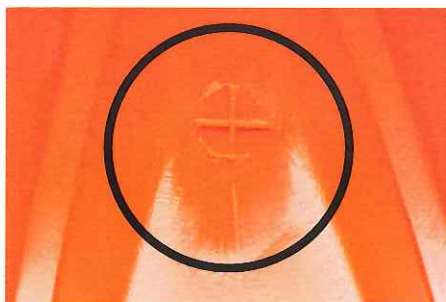


### Copies/Infringement

If there is a hand-trimmed  
injection molded sprue on the  
inside surface of the helmet,  
it is a copy.



*No, Copy/Infringement.*





Is the texture of the inside surface of the helmet smooth?

# 8

## 8. Smooth Inside Surface

*Authentic MSA V-Gard*



The inside surface of all MSA V-Gard Helmets is smooth.



*Yes, MSA Original.*

*Copies/Infringement*



If there are any obvious projections or imperfections on the inside surface of the helmet, it is a copy.



*No, Copy/Infringement.*



**A group of helmets showing the MSA original in the front (yellow), with 4 copies.**



## 9. Cavity Number

Is there a cavity number on the inside brim of the helmet?

### Authentic MSA V-Gard

All MSA V-Gard Helmets have a cavity number on the helmet (usually on the underbrim).



Yes, MSA Original.



### Copies/Infringement

If there is no cavity number on the helmet, it is probably a copy.



No, Copy/Infringement.

